



System Engineer (LIS)

Workplace: 061331, Bucharest

Apply online!

What to expect:

Attached to the department's head manager, you will carry out the following principal missions:

- Ensure a role of animation and project interlocutor at the reporting level
- Driving the convergence of the system
- Guarantees expressions of need on the descent of the V-cycle to integrate physical parts
- Ensure and keep the system schedule up-to-date so that needs converge on schedule and PFS can deliver on the planned milestone
- Reporting to various project instances (Electrical Electronics Architect, vehicle integration, arbitration request, ...)
- Participate in CTAE (architect committee), IP (project bodies - vehicle project manager present to discuss cost-time issues for example)
- Make and maintain a LUP (Unique List of Problems) to trace hard points
- Make and maintain a reporting chart of hard points
- Organize the CTD (Technical Development Committee) to share and solve technical problems
- Define the validation schedule with suppliers (example: Daimler)
- Define the technical file (DSF) for the

What you bring along:

Your profile :

- Good knowledge of the automotive engineering sector, even other sectors of the industry, IT
- Good communicator and good relationship
- Team spirit
- Good network (car world, ...)
- French and English (read, write, speak)

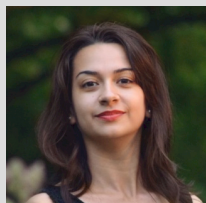
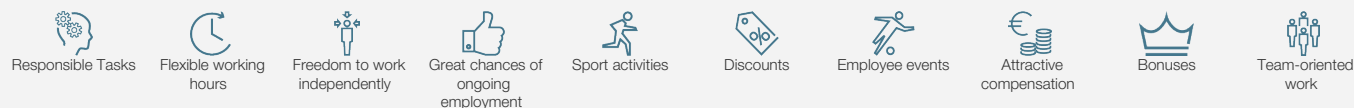
implementation of the test benches

- Monitor the validations on the electronic benches (HMI, PIE and vehicle system bench)
- Synthesize all validations (Cluster, A-IVI, PIE, ...)
- Define the criticality of the hard points encountered and reassembled in the MQQ (Quality Business Engagement) thanks to the BeamReport tool
- Synthesis to cross the milestones

With more than 50 facilities in Europe, the Bertrandt Group has been providing development solutions for the international automotive and aircraft industry since 1974. Every day, more than 12 000 employees guarantee extensive know - how and support our client (Manufacturer and OEM) with management, design and industrialization solutions.

Bertrandt Romania offers you opportunities in the automotive sector (body in white, interior and exterior, layout, powertrain, and electronics). Moreover, we are also present in interdisciplinary field such as project management, quality management, supply chain/industrialization and validations

What we offer:



Contact:

Marilena Dumitru

Tel.: 0786 187 035

www.bertrandt.com/en/career

Share:

