



Specialist Integration Validation - SW Validation on HIL

Workplace: 061331, Bucharest

Apply online!

What to expect:

- The Specialist Integration Validation - SW Validation on HIL (SIV) is an engineer with **with some experience** and technical background in validation/testing of software in automotive projects and good DDT2000, JIRA and MATLAB/Simulink (MathWorks) knowledge.

The SIV will report to an activity manager and will perform the following actions:

- confirm the requirements needed to be tested on HIL benches;
- follow validation plans and analyze the content carefully;
- create validation plans if the requirement don't have a validation plan associated;
- inform the Validation Project Responsible about the blocking points;
- offer support in the team in order to unblock some validation;
- open tickets in SBM if some tests are not compliant;
- improve the validation process;
- always report the validation steps that are not

What you bring along:

- The Specialist Integration Validation - SW Validation on HIL (SIV) is an engineer (degree in Transport Engineering, Electronic Engineering, Electrical Engineering or similar) with:
 - **Some experience** and technical background in automotive software testing projects;
 - Good understanding of vehicles architecture and operation (Internal Combustion Engine Vehicles, Hybrid and Electric Vehicles);
 - Knowledge of the V Cycle development method;
 - Knowledge of electric and electronic circuit architecture analysis and automotive Electronic Control Units SW development/analysis - writing requirements, decomposition, and allocation of requirements to different impacted systems;
 - Knowledge of car communication protocols;
 - **Knowledge of specific automotive software** (DDT2000, JIRA, Linux, Python, WinSCP and Silk Central (OpenText), Confluence and JT (JTAG), CANalyzer, MATLAB/Simulink (MathWorks), etc.);
 - Knowledge of English language (French language knowledge is "nice to have").

fully compliant;

- always analyze and report the wrong software behavior, even if it is outside of the test plan;
- search for the root cause of the items discovered on the other validation means.

With more than 54 facilities in Europe, the Bertrandt Group has been providing development solutions for the international automotive and aircraft industry since 1974. Every day, more than 12 000 employees guarantee extensive know-how and support our client (Manufacturer and OEM) with management, design and industrialization solutions.

Bertrandt offers you opportunities in the automotive sector (body in white, interior and exterior, layout, powertrain, and electronics) Moreover, we are also present in interdisciplinary field such as project management, quality management, supply chain/industrialization and validations.

What we offer:



Responsible Tasks



Freedom to work independently



Training programs



Great chances of ongoing employment



Discounts



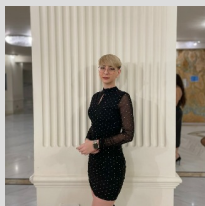
Training on-the Job



Option for a career start



Team-oriented work



Contact:

Maria Popescu

Tel.:

www.bertrandt.com/en/career

Share:

