



## Mechatronics Engineer (Wiper, Washer, Rear view systems)

**Workplace:** 418 32, Gothenburg

**Apply online!**

### What to expect:

- Lead and support the design and engineering development of exterior wiper, washer and rear view systems, from concept to release.
  - Create, review and maintain engineering specifications, CAD models and routing solutions relevant to wiper/washer and mirror components.
  - Secure hose routing and packaging studies to meet system requirements, performance targets and vehicle constraints.
  - Collaborate closely with system engineers, design teams, suppliers and manufacturing to ensure correct system functionality and integration.
  - Coordinate engineering activities to ensure compliance with quality, timing and technical milestones.
  - Support design reviews, documentation updates and release activities within PLM systems.
  - Analyze test results, participate in root-cause investigations and support corrective actions for system issues.

### What you bring along:

- Bachelor's or Master's degree in Mechatronics, Mechanical Engineering, Electrical Engineering, or a related field.
  - Experience working with automotive mechatronic systems, preferably wiper/washer, rear view systems, or similar electromechanical components.
  - Understanding of actuator systems, electric motors, sensors, wiring interfaces and component integration.
  - Hands-on experience with CAD environments (CATIA, NX or similar) for reviewing or releasing engineering models.
  - Knowledge of engineering processes such as FMEA, DVP, verification methods and release workflows.
  - Ability to interpret technical specifications, drawings and system requirements.
  - Strong communication, analytical and problem-solving skills.
  - Fluency in English.

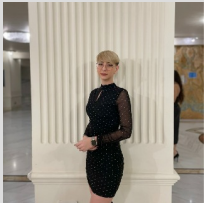
- Ensure that designs meet requirements related to durability, functionality, safety, cost and manufacturability.
- Contribute to continuous improvement of processes, methods and technical guidelines within the engineering team.

#### Preferred Skills:

- Previous experience working with global automotive OEMs or Tier 1 suppliers.
- Understanding of vehicle exterior systems, water management or actuation mechanisms.
- Basic knowledge of CAN/LIN communication, diagnostics or embedded systems interactions.
- Familiarity with environmental and durability testing for exterior components.
- Experience coordinating technical deliverables and collaborating with international engineering teams.

With more than **54 locations throughout Europe**, the **Bertrandt Group** has been providing **engineering and development solutions** for the international **automotive and aerospace industries** since **1974**. More than **12,000 employees** use their **know-how** and **innovative strength** every day to support our customers – **leading manufacturers and OEMs** – with integrated solutions in **management, design, and industrialization**.

**Bertrandt is now expanding into Sweden**, establishing a **strong and future-oriented presence in Gothenburg**. Our activities cover a **spectrum of expertise** from **electrical, electronics, and software development** to **design engineering, project management, quality, industrialization, and validation**, all driven by **innovation** and a **passion for technology**.



#### Contact:

Maria Popescu

Tel.:

[www.bertrandt.com/en/career](http://www.bertrandt.com/en/career)

#### Share:

