



Software Architect Embedded Tools

Workplace: 061331, Bucharest

Apply online!

What to expect:

As an expert Software Architect you will have to lead the design and development of the core "Code-to-Artifact" toolchain. You will be responsible for the architectural vision for all the foundational tools that build, package, test, and secure our software. Your focus will be on the "factory floor"—ensuring our build systems, dependency management, and quality analysis tools are robust, efficient, and provide a world-class foundation for our CI/CD platform.

- Architectural Vision & Design: Design and document the architecture for our embedded build systems (CMake), dependency management & packaging solutions (Conan) keeping incremental design principles in mind.
- Technical Strategy & Roadmap: Partner with the Program Manager and Product Owner to define the long-term technical roadmap. Identify, prioritize, and create remediation plans for significant architectural and technical debt within the toolchain domain.
- System Integration: Facilitate architectural discussions and decisions with Technical Leads and development teams, fostering shared understanding and collective ownership of architectural solutions. Act as a technical coach and guide, empowering

What you bring along:

- Build System Mastery: World-class expertise in CMake and embedded compiler toolchains (GCC/Clang), including cross-compilation.
- Dependency Management Expertise: Deep, hands-on knowledge of Conan for C++ and Python packaging, including creating and managing complex dependency graphs.
- Software Design: Mastery of software design principles (SOLID) and patterns (GoF) for creating high-quality, reusable software tools.
- Security & Quality Tooling: Experience designing and integrating systems for SAST, SCA, and FOSS license compliance management.
- Embedded SW Development Expertise: Some background in (Linux-based) embedded software development (ideally C++) is required.
- Microcontroller/RTOS experience is a major plus.
- Scripting & Automation: Expert-level proficiency in Python for complex tool development and automation.

teams to solve complex architectural challenges.
Review the technical design to assure a consistent & coherent development that meets the architectural vision.

- Technology Governance: Establish and govern standards for tool development. Evaluate and select core technologies for build, analysis, and dependency management.
- Collaboration: Work closely with the SW Architect (CI/CD) to ensure all tools have clear, stable interfaces for easy integration into the end-to-end workflows
- Continuously assess the architecture's impact on quality attributes such as speed and reliability of value delivery to end-users (developers), identifying bottlenecks and proposing architectural solutions to optimize flow efficiency.

Lorem ipsum dolor sit amet, consetetur sadipscing elitr, sed diam nonumy eirmod tempor invidunt ut labore et dolore magna aliquyam erat, sed diam voluptua. At vero eos et accusam et justo duo dolores et ea rebum. Stet clita kasd gubergren, no sea takimata sanctus est Lorem ipsum dolor sit amet. Lorem ipsum dolor sit amet, consetetur sadipscing elitr, sed diam nonumy eirmod tempor invidunt ut labore et dolore magna aliquyam erat, sed diam voluptua. At vero eos et accusam et justo duo dolores et ea rebum. Stet clita kasd gubergren, no sea takimata sanctus est Lorem ipsum dolor sit amet.

What we offer:



Responsible Tasks



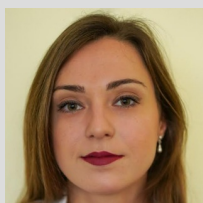
Flexible working hours



Training programs



Attractive compensation



Contact:

Andrada Ciocirlan

Tel.: 0786493935

www.bertrandt.com/en/career

Share:



